



Making Newbury a town
we can all be proud of



Newbury Town Council Precept 2025/26

www.newbury.gov.uk / 0163535486 / towncouncil@newbury.gov.uk

Town Hall, Market Place, Newbury, RG14 5AA



Councillor Information

Speenhamland

jo.day@newbury.gov.uk
- Liberal Democrat
steve.masters@newbury.gov.uk
- Green Party

Clay Hill

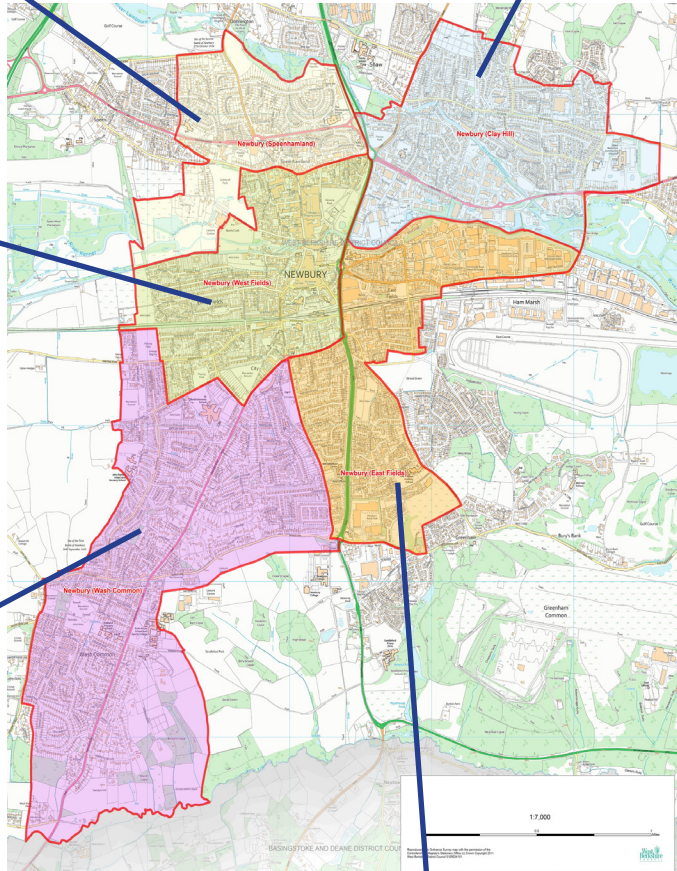
chris.hood@newbury.gov.uk - Liberal Democrat
ian.jee@newbury.gov.uk - Liberal Democrat
nigel.foot@newbury.gov.uk - Liberal Democrat
pam.lusbytaylor@newbury.gov.uk - Liberal Democrat
vera.barnett@newbury.gov.uk - Liberal Democrat

West Fields

alastair.bounds@newbury.gov.uk
- Liberal Democrat
andy.moore@newbury.gov.uk
- Liberal Democrat
elizabeth.okeeffe@newbury.gov.uk
- Liberal Democrat
sarah.slack@newbury.gov.uk
- Liberal Democrat
martha.vickers@newbury.gov.uk
- Liberal Democrat

Wash Common

david.marsh@newbury.gov.uk
- Green Party
meg.thomas@newbury.gov.uk
- Liberal Democrat
sam.dibas@newbury.gov.uk
- Liberal Democrat
roger.hunneman@newbury.gov.uk
- Liberal Democrat
graham.storey@newbury.gov.uk
- Green Party
tony.vickers@newbury.gov.uk
- Liberal Democrat



East Fields

billy.drummond@newbury.gov.uk - Liberal Democrat
david.harman@newbury.gov.uk - Liberal Democrat
gary.norman@newbury.gov.uk - Liberal Democrat
phil.barnett@newbury.gov.uk - Liberal Democrat
vaughan.miller@newbury.gov.uk - Liberal Democrat

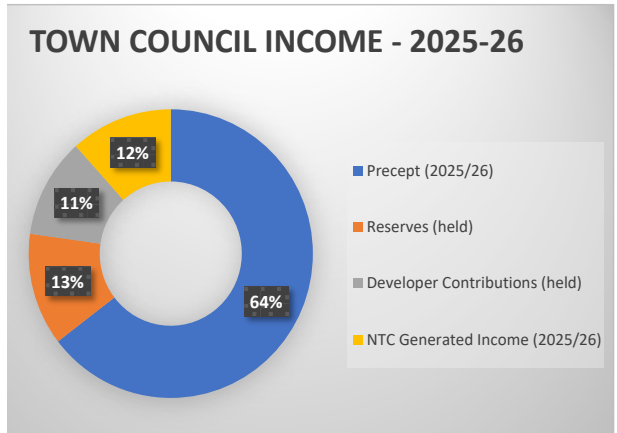


Precept Explained 2025-26

The Council Tax payable by West Berkshire residents is split into amounts for West Berkshire District Council, Thames Valley Police, the Fire and Rescue Service and your local town or parish council.

Newbury Town Council plans to spend £2,814,176M next year to provide services and facilities for the people of Newbury.

64% of these funds come from what is known as “The Precept” which is the amount of Council Tax collected by West Berkshire District Council and paid to Newbury Town Council.



Newbury households will pay an average of £134.72 in 2025-26 to Newbury Town Council for the services we deliver to the people of Newbury (an average of £2.59 per household per week).

Over the past year Newbury Town Council has maintained the town's six allotments, fifteen play areas, the market and two cemeteries. Supported by our Civic Team, the Town Mayor has attended just under two hundred community events, raising the profile of the town, and plans a similar programme over 2025/26. The Council continues to financially support, amongst others, West Berkshire Citizens Advice and Berkshire Youth, alongside a grants programme to community charities and organisations in partnership with The Good Exchange.



Funding for the Victoria Park café will be carried forward to next year's budget through payments that developers are required to contribute (CIL) and earmarked reserves, with the aim of opening the café in the coming financial year. In addition, we are planning to develop 9-a-side football in Victoria Park, continue our programme of play area upgrades, work in partnership with town partners to deliver commemorative events for VE day, enter Thames and Chiltern in Bloom for the first time since 2019, and run the ever-popular Family Fun Day.

The Council, financially, continues to be challenged with the growing cost of delivering essential local government services, affected this year particularly by the increased cost of Utilities, National Insurance contributions and, related to government wage increases, increased costs of our contractors and suppliers. A necessary staffing increase also incurs cost; this will improve the delivery of our projects, and strengthen the council's operations, by enhancing service resilience, succession planning, maintenance schedules and community engagement. To prepare for future financial demands, we have increased our annual maintenance fund in response to new responsibilities. The Council regards this as a prudent and necessary step to ensure the ongoing financial health of the Council.

To meet our costs, the Council has agreed a precept in 2025/26 of £1,817,641. This will result in the Council Tax precept for Band D households in Newbury, of £2.59 per household per week. This accounts for 64% of our projected 2025/26 spend, the remainder coming from developer contributions, our ear-marked reserves, and Council generated income.

Despite the challenges, we remain committed to maintaining Newbury as a town its residents can take pride in, with a focus on responsible financial management and service excellence.

Councillor Gary Norman,
Leader of Newbury Town Council.